



TRANSPORTATION CABINET

Frankfort, Kentucky 40622
www.transportation.ky.gov/

Steven L. Beshear
Governor

Michael W. Hancock, P.E.
Secretary

December 1, 2014

CALL NO. 114
CONTRACT ID NO. 141501
ADDENDUM # 1

Subject: Oldham County, STPM 5140 (038)
Letting December 12, 2014

- (1) Revised - Plan Sheets - R39 & R40
- (2) Revised - Front Sheet
- (3) Revised - Completion Date - Page 4 of 287
- (4) Revised - Wage Rates - Pages 264-277 of 287

Proposal revisions are available at <http://transportation.ky.gov/Construction-Procurement/>.

Plan revisions are available at <http://www.lynnimaging.com/kytransportation/>.

If you have any questions, please contact us at 502-564-3500.

Sincerely,

A handwritten signature in blue ink that reads "Diana Castle Radcliffe".

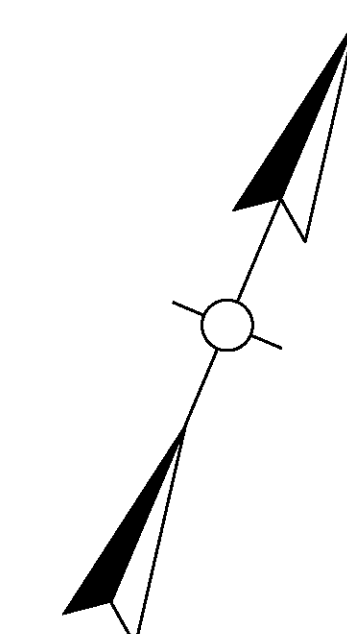
Diana Castle Radcliffe
Director
Division of Construction Procurement

DR:ks
Enclosures



An Equal Opportunity Employer M/F/D

REVISED 11-26-14



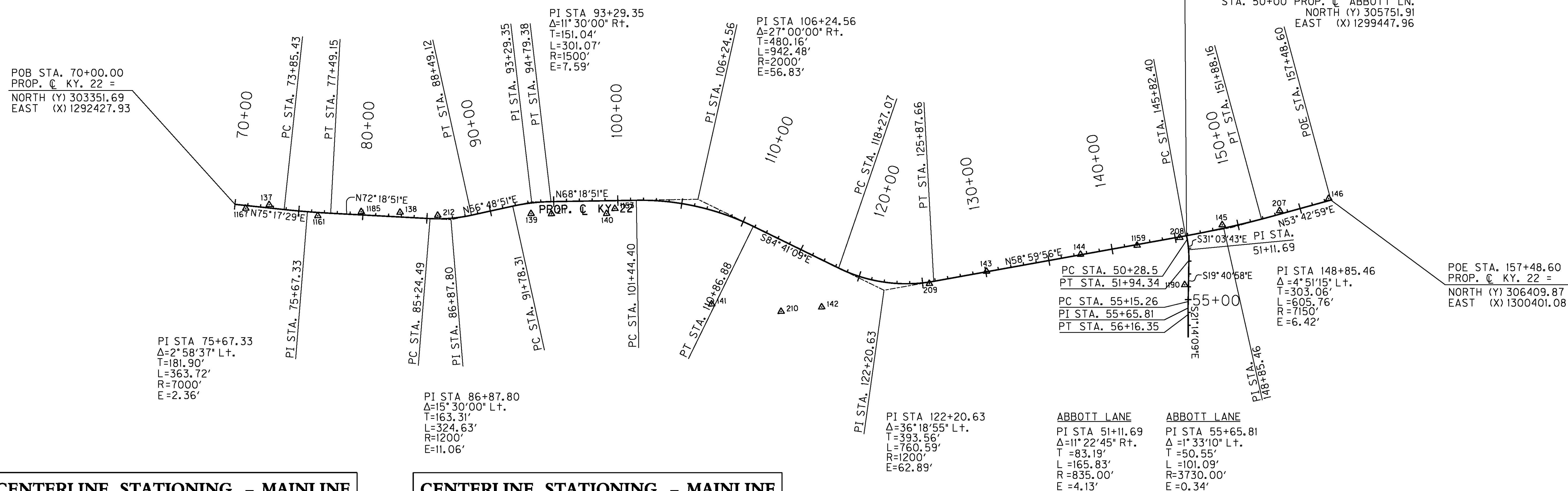
COORDINATE CONTROL POINTS

| POINT | DESCRIPTION | State Plane Coordinates | | | STATION and OFFSET |
|-------|------------------------------|-------------------------|------------|-----------|--------------------------|
| | | NORTH (Y) | EAST (X) | ELEV. (Z) | |
| 137 | 5/8" Rebar w/2 1/2" Alum Cap | 303443.21 | 1292678.42 | 798.86 | 72+65.52, 24.93' Left |
| 138 | 5/8" Rebar w/2 1/2" Alum Cap | 303749.34 | 1293652.99 | 791.09 | 82+88.65, 36.16' Left |
| 139 | Conc Mon w/2 1/2" Alum Cap | 304101.60 | 1294610.89 | 765.16 | 93+12.87, 82.29' Right |
| 140 | Conc Mon w/2 1/2" Alum Cap | 304310.38 | 1295161.08 | 735.57 | 99+10.72, 100.32' Right |
| 141 | 5/8" Rebar w/2 1/2" Alum Cap | 303941.25 | 1296176.71 | 653.05 | 110+48.52, 686.69' Right |
| 142 | 5/8" Rebar w/2 1/2" Alum Cap | 304223.39 | 1296986.77 | 659.62 | 118+38.87, 331.06' Right |
| 143 | Conc Mon w/2 1/2" Alum Cap | 304939.19 | 1298089.57 | 723.14 | 130+07.05, 3.01' Left |
| 144 | Conc Mon w/2 1/2" Alum Cap | 305322.04 | 1298727.27 | 733.29 | 137+50.85, 2.73' Left |
| 145 | 5/8" Rebar w/2 1/2" Alum Cap | 305929.28 | 1299677.90 | 750.78 | 148+79.68, 27.45' Left |
| 146 | 5/8" Rebar w/2 1/2" Alum Cap | 306415.69 | 1300381.10 | 761.98 | 157+35.82, 16.42' Left |
| 207 | Conc Mon w/2 1/2" Alum Cap | 306190.37 | 1300057.32 | 758.34 | 153+41.41, 23.45' Left |

COORDINATE CONTROL POINTS

| POINT | DESCRIPTION | State Plane Coordinates | | | STATION and OFFSET |
|-------|----------------------------|-------------------------|------------|-----------|--------------------------|
| | | NORTH (Y) | EAST (X) | ELEV. (Z) | |
| 208 | Conc Mon w/2 1/2" Alum Cap | 305718.93 | 1299403.58 | 744.02 | 145+34.97, 5.41' Right |
| 209 | Conc Mon w/2 1/2" Alum Cap | 304691.91 | 1297706.49 | 714.66 | 125+51.69, 12.18' Right |
| 210 | Conc Mon w/2 1/2" Alum Cap | 304078.66 | 1296703.29 | 649.47 | 115+73.27, 501.35' Right |
| 211 | Conc Mon w/2 1/2" Alum Cap | 304156.04 | 1294759.83 | 758.81 | 94+80.84, 95.47' Right |
| 212 | Conc Mon w/2 1/2" Alum Cap | 303831.25 | 1293935.61 | 786.41 | 85+84.16, 26.89' Left |
| 1153 | 5/8" Rebar w/Plastic Cap | 304369.58 | 1295207.67 | 731.49 | 99+75.89, 62.53' Right |
| 1159 | 5/8" Rebar | 305544.32 | 1299114.54 | 739.57 | 141+97.28, 6.21' Right |
| 1161 | 5/8" Rebar w/Plastic Cap | 303496.86 | 1293062.78 | 798.64 | 76+50.00, 25.79' Right |
| 1167 | PK Nail | 303351.89 | 1292517.11 | 796.89 | 70+86.32, 22.44' Right |
| 1185 | 5/8" Rebar w/Plastic Cap | 303646.07 | 1293368.42 | 794.67 | 79+86.16, 24.22' Left |
| 1190 | 5/8" Rebar w/Plastic Cap | 305388.47 | 1299570.34 | 738.30 | *53+85.08, 29.22' Right |

* Indicates Station and Offset from Prop. & Abbott Lane



CENTERLINE STATIONING - MAINLINE

| POINT | STATION | State Plane Coordinates | |
|-------|----------|-------------------------|------------|
| | | NORTH (Y) | EAST (X) |
| PC | 73+85.43 | 303449.55 | 1292800.73 |
| PI | 75+67.33 | 303495.73 | 1292976.67 |
| PT | 77+49.15 | 303550.99 | 1293149.97 |
| PC | 85+24.49 | 303786.54 | 1293888.66 |
| PI | 86+87.80 | 303836.15 | 1294044.26 |
| PT | 88+49.12 | 303925.54 | 1294180.93 |
| PC | 91+78.31 | 304105.72 | 1294456.43 |
| PI | 93+29.35 | 304188.40 | 1294582.84 |
| PT | 94+79.38 | 304244.21 | 1294723.19 |

CENTERLINE STATIONING - MAINLINE

| POINT | STATION | State Plane Coordinates | |
|-------|-----------|-------------------------|------------|
| | | NORTH (Y) | EAST (X) |
| PC | 101+44.40 | 304489.95 | 1295341.15 |
| PI | 106+24.56 | 304667.37 | 1295787.32 |
| PT | 110+86.88 | 304622.90 | 1296265.42 |
| PC | 118+27.07 | 304554.34 | 1297002.43 |
| PI | 122+20.63 | 304517.89 | 1297394.30 |
| PT | 125+87.66 | 304720.60 | 1297731.64 |
| PC | 145+82.40 | 305747.99 | 1299441.44 |
| PI | 148+85.46 | 305904.09 | 1299701.21 |
| PT | 151+88.16 | 306081.60 | 1299946.84 |

CENTERLINE STATIONING - ABBOTT LN

| POINT | STATION | State Plane Coordinates | |
|-------|----------|-------------------------|------------|
| | | NORTH (Y) | EAST (X) |
| PC | 50+28.50 | 305727.50 | 1299462.66 |
| PI | 51+11.69 | 305656.23 | 1299505.59 |
| PT | 51+94.34 | 305577.90 | 1299533.61 |
| PC | 55+15.26 | 305275.73 | 1299641.70 |
| PI | 55+65.81 | 305228.14 | 1299658.73 |
| PT | 56+16.35 | 305181.02 | 1299677.03 |
| POE | 57+94.71 | 305014.77 | 1299741.63 |

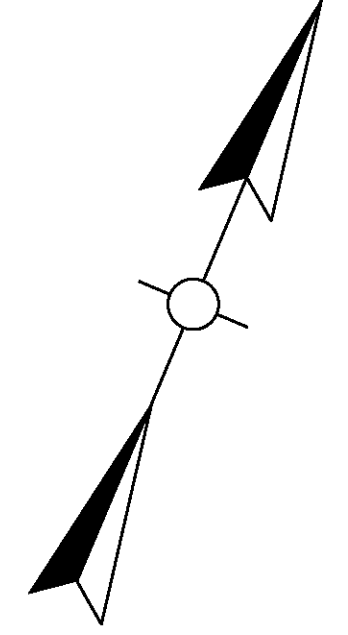
BASIS OF ELEVATIONS
Elevations were obtained by differential methods and are adjusted to the NAVD88 Vertical Datum.

**KY 22 RECONSTRUCTION
COORDINATE CONTROL SHEET
STA. 70+00 TO STA. 155+00**

SCALE: 1"=400

FILE NAME: U:\96101\FIN KY22 OLDHAM COUNTY\CURRYS FORK BRIDGE 3-LANE SECTION\ELECTRONIC SUBMITTAL\2014 11 25 CC CHANGES\RO3900CC.DGN
 USER: Ford
 DATE PLOTTED: November 25, 2014
 E-SHEET NAME: R03900CC
 MicroStation v8.11.7.443

REVISED 11-26-14



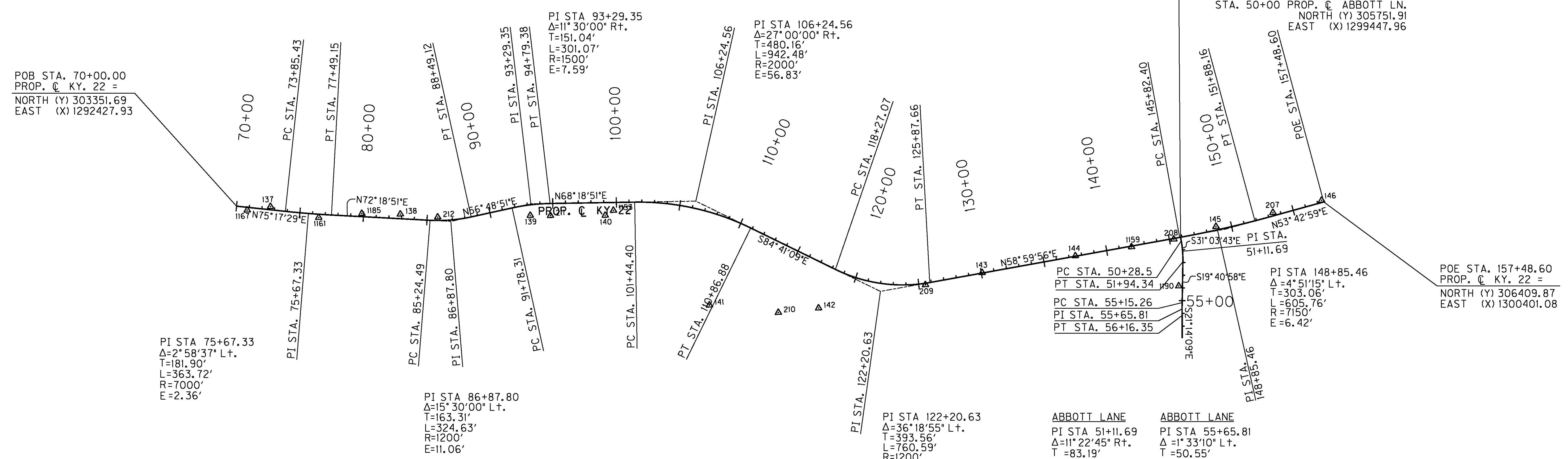
COORDINATE CONTROL POINTS

| POINT | DESCRIPTION | State Plane Coordinates | | | STATION and OFFSET |
|-------|------------------------------|-------------------------|------------|-----------|--------------------------|
| | | NORTH (Y) | EAST (X) | ELEV. (Z) | |
| 137 | 5/8" Rebar w/2 1/2" Alum Cap | 303443.21 | 1292678.42 | 798.86 | 72+65.52, 24.93' Left |
| 138 | 5/8" Rebar w/2 1/2" Alum Cap | 303749.34 | 1293652.99 | 791.09 | 82+88.65, 36.16' Left |
| 139 | Conc Mon w/2 1/2" Alum Cap | 304101.60 | 1294610.89 | 765.16 | 93+12.87, 82.29' Right |
| 140 | Conc Mon w/2 1/2" Alum Cap | 304310.38 | 1295161.08 | 735.57 | 99+10.72, 100.32' Right |
| 141 | 5/8" Rebar w/2 1/2" Alum Cap | 303941.25 | 1296176.71 | 653.05 | 110+48.52, 686.69' Right |
| 142 | 5/8" Rebar w/2 1/2" Alum Cap | 304223.39 | 1296986.77 | 659.62 | 118+38.87, 331.06' Right |
| 143 | Conc Mon w/2 1/2" Alum Cap | 304939.19 | 1298089.57 | 723.14 | 130+07.05, 3.01' Left |
| 144 | Conc Mon w/2 1/2" Alum Cap | 305322.04 | 1298727.27 | 733.29 | 137+50.85, 2.73' Left |
| 145 | 5/8" Rebar w/2 1/2" Alum Cap | 305929.28 | 1299677.90 | 750.78 | 148+79.68, 27.45' Left |
| 146 | 5/8" Rebar w/2 1/2" Alum Cap | 306415.69 | 1300381.10 | 761.98 | 157+35.82, 16.42' Left |
| 207 | Conc Mon w/2 1/2" Alum Cap | 306190.37 | 1300057.32 | 758.34 | 153+41.41, 23.45' Left |

COORDINATE CONTROL POINTS

| POINT | DESCRIPTION | State Plane Coordinates | | | STATION and OFFSET |
|-------|----------------------------|-------------------------|------------|-----------|--------------------------|
| | | NORTH (Y) | EAST (X) | ELEV. (Z) | |
| 208 | Conc Mon w/2 1/2" Alum Cap | 305718.93 | 1299403.58 | 744.02 | 145+34.97, 5.41' Right |
| 209 | Conc Mon w/2 1/2" Alum Cap | 304691.91 | 1297706.49 | 714.66 | 125+51.69, 12.18' Right |
| 210 | Conc Mon w/2 1/2" Alum Cap | 304078.66 | 1296703.29 | 649.47 | 115+73.27, 501.35' Right |
| 211 | Conc Mon w/2 1/2" Alum Cap | 304156.04 | 1294759.83 | 758.81 | 94+80.84, 95.47' Right |
| 212 | Conc Mon w/2 1/2" Alum Cap | 303831.25 | 1293935.61 | 786.41 | 85+84.16, 26.89' Left |
| 1153 | 5/8" Rebar w/Plastic Cap | 304369.58 | 1295207.67 | 731.49 | 99+75.89, 62.53' Right |
| 1159 | 5/8" Rebar | 305544.32 | 1299114.54 | 739.57 | 141+97.28, 6.21' Right |
| 1161 | 5/8" Rebar w/Plastic Cap | 303496.86 | 1293062.78 | 798.64 | 76+50.00, 25.79' Right |
| 1167 | PK Nail | 303351.89 | 1292517.11 | 796.89 | 70+86.32, 22.44' Right |
| 1185 | 5/8" Rebar w/Plastic Cap | 303646.07 | 1293368.42 | 794.67 | 79+86.16, 24.22' Left |
| 1190 | 5/8" Rebar w/Plastic Cap | 305388.47 | 1299570.34 | 738.30 | *53+85.08, 29.22' Right |

* Indicates Station and Offset from Prop. & Abbott Lane



CENTERLINE STATIONING - MAINLINE

| POINT | STATION | State Plane Coordinates | |
|-------|----------|-------------------------|------------|
| | | NORTH (Y) | EAST (X) |
| PC | 73+85.43 | 303449.55 | 1292800.73 |
| PI | 75+67.33 | 303495.73 | 1292976.67 |
| PT | 77+49.15 | 303550.99 | 1293149.97 |
| PC | 85+24.49 | 303786.54 | 1293888.66 |
| PI | 86+87.80 | 303836.15 | 1294044.26 |
| PT | 88+49.12 | 303925.54 | 1294180.93 |
| PC | 91+78.31 | 304105.72 | 1294456.43 |
| PI | 93+29.35 | 304188.40 | 1294582.84 |
| PT | 94+79.38 | 304244.21 | 1294723.19 |

CENTERLINE STATIONING - MAINLINE

| POINT | STATION | State Plane Coordinates | |
|-------|-----------|-------------------------|------------|
| | | NORTH (Y) | EAST (X) |
| PC | 101+44.40 | 304489.95 | 1295341.15 |
| PI | 106+24.56 | 304667.37 | 1295787.32 |
| PT | 110+86.88 | 304622.90 | 1296265.42 |
| PC | 118+27.07 | 304554.34 | 1297002.43 |
| PI | 122+20.63 | 304517.89 | 1297394.30 |
| PT | 125+87.66 | 304720.60 | 1297731.64 |
| PC | 145+82.40 | 305747.99 | 1299441.44 |
| PI | 148+85.46 | 305904.09 | 1299701.21 |
| PT | 151+88.16 | 306081.60 | 1299946.84 |

CENTERLINE STATIONING - ABBOTT LN

| POINT | STATION | State Plane Coordinates | |
|-------|----------|-------------------------|------------|
| | | NORTH (Y) | EAST (X) |
| PC | 50+28.50 | 305727.50 | 1299462.66 |
| PI | 51+11.69 | 305656.23 | 1299505.59 |
| PT | 51+94.34 | 305577.90 | 1299533.61 |
| PC | 55+15.26 | 305275.73 | 1299641.70 |
| PI | 55+65.81 | 305228.14 | 1299658.73 |
| PT | 56+16.35 | 305181.02 | 1299677.03 |
| POE | 57+94.71 | 305014.77 | 1299741.63 |

DELETED NOTE FOR PROJECT COORDINATES.

BASIS OF ELEVATIONS
Elevations were obtained by differential methods and are adjusted to the NAVD88 Vertical Datum.

**KY 22 RECONSTRUCTION
COORDINATE CONTROL SHEET
STA. 70+00 TO STA. 155+00**

SCALE: 1"=400

FILE NAME: U:\96101\FIN KY22 OLDHAM COUNTY\CURRYS FORK BRIDGE 3-LANE SECTION\ELECTRONIC SUBMITTAL\2014 11 25 CC CHANGES\RO3900CC.DGN
 USER: Ford
 DATE PLOTTED: November 25, 2014
 E-SHEET NAME: R03900CC
 MicroStation v8.11.7.443

REVISED 11-26-14

R/W MONUMENT POINTS

| STATION and OFFSET (Left) | State Plane Coordinates | |
|------------------------------|-------------------------|------------|
| | NORTH (Y) | EAST (X) |
| 79 + 53.11, 55.10 Lt. | 303665.45 | 1293327.55 |
| 82 + 91.72, 53.35 Lt. | 303766.65 | 1293650.69 |
| 88 + 00.00, 59.17 Lt. | 303950.31 | 1294108.95 |
| 89 + 60.00, 80.00 Lt. | 304053.18 | 1294229.94 |
| 91 + 50.00, 55.00 Lt. | 304136.26 | 1294402.64 |
| 95 + 00.00, 65.00 Lt. | 304312.23 | 1294718.34 |
| 96 + 50.00, 65.00 Lt. | 304367.66 | 1294857.72 |
| 98 + 50.00, 55.00 Lt. | 304432.27 | 1295047.26 |
| 99 + 25.00, 85.00 Lt. | 304487.86 | 1295105.87 |
| 99 + 50.00, 85.00 Lt. | 304497.10 | 1295129.10 |
| 100 + 10.00, 55.00 Lt. | 304491.39 | 1295195.94 |
| 101 + 00.00, 80.00 Lt. | 304547.88 | 1295270.33 |
| 103 + 44.18, 44.99 Lt. | 304597.63 | 1295517.79 |

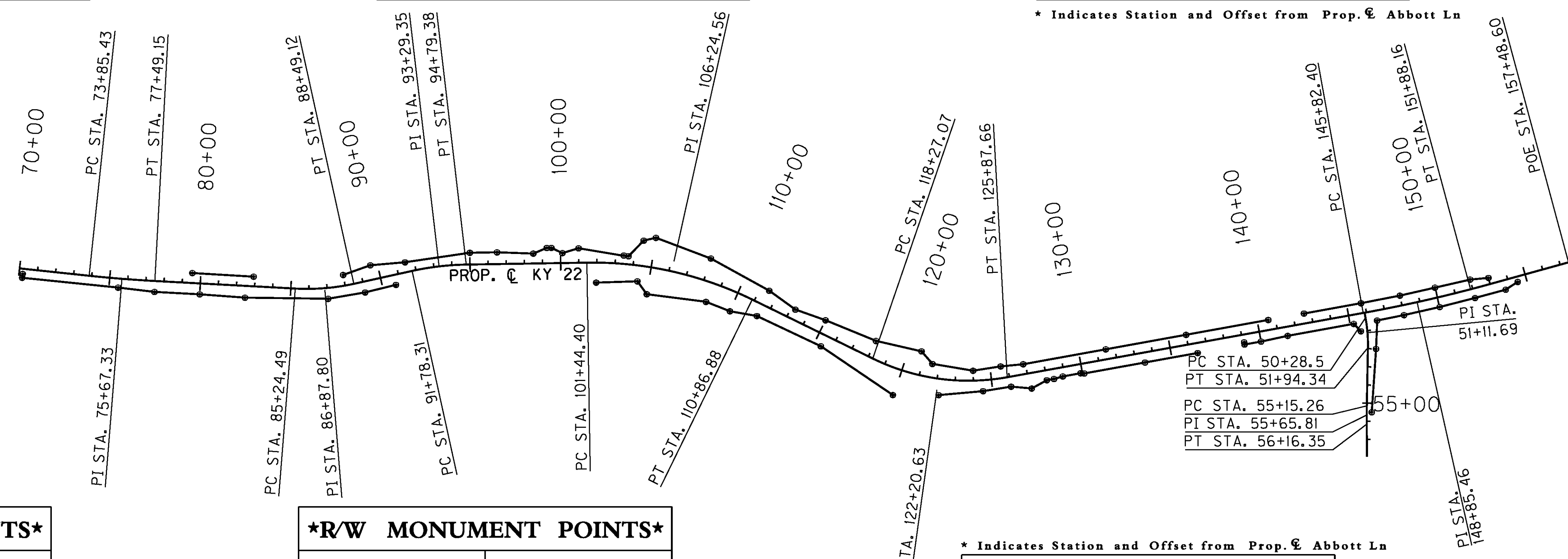
R/W MONUMENT POINTS

| STATION and OFFSET (Left) | State Plane Coordinates | |
|------------------------------|-------------------------|------------|
| | NORTH (Y) | EAST (X) |
| 103 + 70.00, 45.00 Lt. | 304604.74 | 1295543.22 |
| 104 + 40.00, 140.00 Lt. | 304714.81 | 1295590.87 |
| 105 + 00.00, 165.00 Lt. | 304753.04 | 1295648.60 |
| 108 + 00.00, 125.00 Lt. | 304753.77 | 1295972.51 |
| 111 + 50.00, 85.00 Lt. | 304701.69 | 1296336.14 |
| 113 + 25.00, 55.00 Lt. | 304655.61 | 1296507.61 |
| 115 + 00.00, 75.00 Lt. | 304659.32 | 1296683.71 |
| 118 + 00.00, 95.00 Lt. | 304651.44 | 1296984.27 |
| 120 + 80.00, 130.00 Lt. | 304686.63 | 1297239.56 |
| 121 + 60.00, 75.00 Lt. | 304643.32 | 1297320.16 |
| 124 + 00.00, 55.00 Lt. | 304687.87 | 1297543.25 |
| 125 + 61.47, 65.00 Lt. | 304763.78 | 1297676.78 |
| 126 + 87.46, 55.00 Lt. | 304819.14 | 1297788.86 |

R/W MONUMENT POINTS

| STATION and OFFSET (Left) | State Plane Coordinates | |
|--------------------------------|-------------------------|------------|
| | NORTH (Y) | EAST (X) |
| 131 + 50.00, 55.00 Lt. | 305057.38 | 1298185.32 |
| 136 + 00.00, 55.00 Lt. | 305289.15 | 1298571.04 |
| 140 + 60.25, 55.00 Lt. | 305526.20 | 1298965.55 |
| 140 + 60.25, 47.74 Lt. | 305519.98 | 1298969.29 |
| 142 + 60.32, 55.00 Lt. | 305629.25 | 1299137.04 |
| 142 + 60.31, 47.71 Lt. | 305623.00 | 1299140.79 |
| (TY 1A) 145 + 80.00, 55.00 Lt. | 305793.90 | 1299411.06 |
| 148 + 00.00, 55.00 Lt. | 305909.15 | 1299596.48 |
| 150 + 00.00, 55.00 Lt. | 306018.82 | 1299761.88 |
| 152 + 00.00, 50.00 Lt. | 306129.06 | 1299927.15 |
| 153 + 00.00, 32.47 Lt. | 306173.43 | 1300018.47 |
| * 52 + 00.00, 45.00 Lt. | 305587.73 | 1299577.88 |
| * 55 + 50.00, 27.43 Lt. | 305252.56 | 1299679.29 |

* Indicates Station and Offset from Prop. & Abbott Ln



R/W MONUMENT POINTS

| STATION and OFFSET (Right) | State Plane Coordinates | |
|-------------------------------|-------------------------|------------|
| | NORTH (Y) | EAST (X) |
| 70 + 20.00, 28.23 Rt. | 303329.46 | 1292454.44 |
| 70 + 20.00, 50.00 Rt. | 303308.40 | 1292459.97 |
| 75 + 50.00, 50.00 Rt. | 303445.15 | 1292973.23 |
| 77 + 50.00, 60.00 Rt. | 303494.09 | 1293169.01 |
| 80 + 00.00, 60.00 Rt. | 303570.03 | 1293407.19 |
| 82 + 50.00, 65.00 Rt. | 303641.22 | 1293646.89 |
| 87 + 00.00, 60.00 Rt. | 303797.98 | 1294077.76 |
| 89 + 00.00, 60.00 Rt. | 303903.18 | 1294256.36 |
| 90 + 75.00, 55.75 Rt. | 304002.52 | 1294400.49 |
| 101 + 96.75, 110.00 Rt. | 304405.41 | 1295428.00 |
| 104 + 35.00, 87.36 Rt. | 304492.37 | 1295638.20 |
| 105 + 00.00, 150.00 Rt. | 304444.37 | 1295711.39 |
| 108 + 50.00, 110.00 Rt. | 304520.87 | 1296031.63 |
| 110 + 00.00, 110.00 Rt. | 304519.20 | 1296173.34 |

R/W MONUMENT POINTS

| STATION and OFFSET (Right) | State Plane Coordinates | |
|-------------------------------|-------------------------|------------|
| | NORTH (Y) | EAST (X) |
| 111 + 50.00, 70.00 Rt. | 304547.36 | 1296321.78 |
| 115 + 40.00, 65.00 Rt. | 304516.21 | 1296710.57 |
| 119 + 95.04, 145.00 Rt. | 304405.69 | 1297177.06 |
| 122 + 19.59, 90.00 Rt. | 304494.45 | 1297413.12 |
| 124 + 50.00, 60.00 Rt. | 304601.98 | 1297634.65 |
| 126 + 00.00, 55.00 Rt. | 304679.81 | 1297770.54 |
| 127 + 10.00, 85.00 Rt. | 304710.75 | 1297880.28 |
| 128 + 00.00, 55.00 Rt. | 304782.82 | 1297941.97 |
| 128 + 40.00, 55.00 Rt. | 304803.42 | 1297976.26 |
| 128 + 90.00, 50.00 Rt. | 304833.46 | 1298016.54 |
| 129 + 90.00, 50.00 Rt. | 304884.97 | 1298102.26 |
| 130 + 10.00, 55.00 Rt. | 304890.98 | 1298121.98 |
| 133 + 50.00, 55.00 Rt. | 305066.10 | 1298413.41 |
| 136 + 44.90, 55.00 Rt. | 305217.99 | 1298666.19 |

* Indicates Station and Offset from Prop. & Abbott Ln

R/W MONUMENT POINTS

| STATION and OFFSET (Right) | State Plane Coordinates | |
|-------------------------------|-------------------------|------------|
| | NORTH (Y) | EAST (X) |
| 139 + 07.62, 42.65 Rt. | 305363.89 | 1298885.03 |
| 139 + 07.61, 55.00 Rt. | 305353.30 | 1298891.37 |
| 140 + 00.00, 55.00 Rt. | 305400.88 | 1298970.56 |
| 141 + 50.00, 50.00 Rt. | 305482.43 | 1299096.56 |
| 145 + 20.00, 50.00 Rt. | 305673.00 | 1299413.71 |
| 146 + 50.00, 55.00 Rt. | 305736.21 | 1299527.99 |
| 148 + 00.00, 55.00 Rt. | 305816.63 | 1299655.98 |
| 150 + 00.00, 55.00 Rt. | 305928.00 | 1299823.94 |
| 152 + 00.00, 55.00 Rt. | 306043.96 | 1299988.66 |
| 153 + 75.00, 55.00 Rt. | 306146.46 | 1300130.49 |
| 154 + 50.00, 30.57 Rt. | 306210.20 | 1300176.97 |
| * 51 + 00.00, 35.43 Rt. | 305649.13 | 1299465.08 |

Note: R/W monuments will be set in the field prior to Roadway Construction. If monuments are disturbed during construction, refer to the special note for R/W monumentation. Witness posts shall be placed one foot inside the proposed R/W monuments at locations to be determined by the Land Surveyor in charge of monumentation.

**KY 22 RECONSTRUCTION
RIGHT OF WAY MONUMENT SHEET
STA. 70+00 TO STA. 155+00**

SCALE: 1"=400

FILE NAME: U:\96101.FIN KY22 OLDHAM COUNTY\CURRYS FORK BRIDGE 3-LANE SECTION\COVER-COORD CONTROL-SUMSHTS\96101_COORDCONTROL.SHEET.DGN
 USER: Ford
 DATE PLOTTED: November 1, 2010
 E-SHEET NAME: R04000CC
 MicroStation v8.11.7.180

REVISED 11-26-14

R/W MONUMENT POINTS

| STATION and OFFSET (Left) | State Plane Coordinates | |
|------------------------------|-------------------------|------------|
| | NORTH (Y) | EAST (X) |
| 79 + 53.11, 55.10 Lt. | 303665.45 | 1293327.55 |
| 82 + 91.72, 53.35 Lt. | 303766.65 | 1293650.69 |
| 88 + 00.00, 59.17 Lt. | 303950.31 | 1294108.95 |
| 89 + 60.00, 80.00 Lt. | 304053.18 | 1294229.94 |
| 91 + 50.00, 55.00 Lt. | 304136.26 | 1294402.64 |
| 95 + 00.00, 65.00 Lt. | 304312.23 | 1294718.34 |
| 96 + 50.00, 65.00 Lt. | 304367.66 | 1294857.72 |
| 98 + 50.00, 55.00 Lt. | 304432.27 | 1295047.26 |
| 99 + 25.00, 85.00 Lt. | 304487.86 | 1295105.87 |
| 99 + 50.00, 85.00 Lt. | 304497.10 | 1295129.10 |
| 100 + 10.00, 55.00 Lt. | 304491.39 | 1295195.94 |
| 101 + 00.00, 80.00 Lt. | 304547.88 | 1295270.33 |
| 103 + 44.18, 44.99 Lt. | 304597.63 | 1295517.79 |

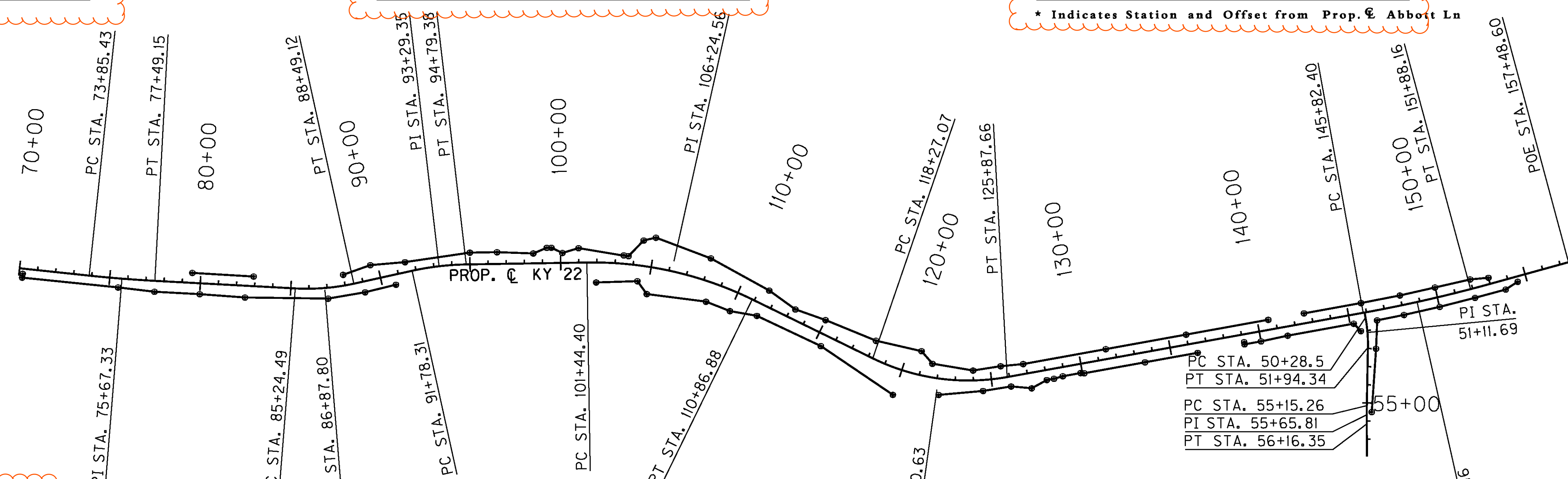
R/W MONUMENT POINTS

| STATION and OFFSET (Left) | State Plane Coordinates | |
|------------------------------|-------------------------|------------|
| | NORTH (Y) | EAST (X) |
| 103 + 70.00, 45.00 Lt. | 304604.74 | 1295543.22 |
| 104 + 40.00, 140.00 Lt. | 304714.81 | 1295590.87 |
| 105 + 00.00, 165.00 Lt. | 304753.04 | 1295648.60 |
| 108 + 00.00, 125.00 Lt. | 304753.77 | 1295972.51 |
| 111 + 50.00, 85.00 Lt. | 304701.69 | 1296336.14 |
| 113 + 25.00, 55.00 Lt. | 304655.61 | 1296507.61 |
| 115 + 00.00, 75.00 Lt. | 304659.32 | 1296683.71 |
| 118 + 00.00, 95.00 Lt. | 304651.44 | 1296984.27 |
| 120 + 80.00, 130.00 Lt. | 304686.63 | 1297239.56 |
| 121 + 60.00, 75.00 Lt. | 304643.32 | 1297320.16 |
| 124 + 00.00, 55.00 Lt. | 304687.87 | 1297543.25 |
| 125 + 61.47, 65.00 Lt. | 304763.78 | 1297676.78 |
| 126 + 87.46, 55.00 Lt. | 304819.14 | 1297788.86 |

R/W MONUMENT POINTS

| STATION and OFFSET (Left) | State Plane Coordinates | |
|--------------------------------|-------------------------|------------|
| | NORTH (Y) | EAST (X) |
| 131 + 50.00, 55.00 Lt. | 305057.38 | 1298185.32 |
| 136 + 00.00, 55.00 Lt. | 305289.15 | 1298571.04 |
| 140 + 60.25, 55.00 Lt. | 305526.20 | 1298965.55 |
| 140 + 60.25, 47.74 Lt. | 305519.98 | 1298969.29 |
| 142 + 60.32, 55.00 Lt. | 305629.25 | 1299137.04 |
| 142 + 60.31, 47.71 Lt. | 305623.00 | 1299140.79 |
| (TY 1A) 145 + 80.00, 55.00 Lt. | 305793.90 | 1299411.06 |
| 148 + 00.00, 55.00 Lt. | 305909.15 | 1299596.48 |
| 150 + 00.00, 55.00 Lt. | 306018.82 | 1299761.88 |
| 152 + 00.00, 50.00 Lt. | 306129.06 | 1299927.15 |
| 153 + 00.00, 32.47 Lt. | 306173.43 | 1300018.47 |
| * 52 + 00.00, 45.00 Lt. | 305587.73 | 1299577.88 |
| * 55 + 50.00, 27.43 Lt. | 305252.56 | 1299679.29 |

* Indicates Station and Offset from Prop. & Abbott Ln



R/W MONUMENT POINTS

| STATION and OFFSET (Right) | State Plane Coordinates | |
|-------------------------------|-------------------------|------------|
| | NORTH (Y) | EAST (X) |
| 70 + 20.00, 28.23 Rt. | 303329.46 | 1292454.44 |
| 70 + 20.00, 50.00 Rt. | 303308.40 | 1292459.97 |
| 75 + 50.00, 50.00 Rt. | 303445.15 | 1292973.23 |
| 77 + 50.00, 60.00 Rt. | 303494.09 | 1293169.01 |
| 80 + 00.00, 60.00 Rt. | 303570.03 | 1293407.19 |
| 82 + 50.00, 65.00 Rt. | 303641.22 | 1293646.89 |
| 87 + 00.00, 60.00 Rt. | 303797.98 | 1294077.76 |
| 89 + 00.00, 60.00 Rt. | 303903.18 | 1294256.36 |
| 90 + 75.00, 55.75 Rt. | 304002.52 | 1294400.49 |
| 101 + 96.75, 110.00 Rt. | 304405.41 | 1295428.00 |
| 104 + 35.00, 87.36 Rt. | 304492.37 | 1295638.20 |
| 105 + 00.00, 150.00 Rt. | 304444.37 | 1295711.39 |
| 108 + 50.00, 110.00 Rt. | 304520.87 | 1296031.63 |
| 110 + 00.00, 110.00 Rt. | 304519.20 | 1296173.34 |

R/W MONUMENT POINTS

| STATION and OFFSET (Right) | State Plane Coordinates | |
|-------------------------------|-------------------------|------------|
| | NORTH (Y) | EAST (X) |
| 111 + 50.00, 70.00 Rt. | 304547.36 | 1296321.78 |
| 115 + 40.00, 65.00 Rt. | 304516.21 | 1296710.57 |
| 119 + 95.04, 145.00 Rt. | 304405.69 | 1297177.06 |
| 122 + 19.59, 90.00 Rt. | 304494.45 | 1297413.12 |
| 124 + 50.00, 60.00 Rt. | 304601.98 | 1297634.65 |
| 126 + 00.00, 55.00 Rt. | 304679.81 | 1297770.54 |
| 127 + 10.00, 85.00 Rt. | 304710.75 | 1297880.28 |
| 128 + 00.00, 55.00 Rt. | 304782.82 | 1297941.97 |
| 128 + 40.00, 55.00 Rt. | 304803.42 | 1297976.26 |
| 128 + 90.00, 50.00 Rt. | 304833.46 | 1298016.54 |
| 129 + 90.00, 50.00 Rt. | 304884.97 | 1298102.26 |
| 130 + 10.00, 55.00 Rt. | 304890.98 | 1298121.98 |
| 133 + 50.00, 55.00 Rt. | 305066.10 | 1298413.41 |
| 136 + 44.90, 55.00 Rt. | 305217.99 | 1298666.19 |

* Indicates Station and Offset from Prop. & Abbott Ln

R/W MONUMENT POINTS

| STATION and OFFSET (Right) | State Plane Coordinates | |
|-------------------------------|-------------------------|------------|
| | NORTH (Y) | EAST (X) |
| 139 + 07.62, 42.65 Rt. | 305363.89 | 1298885.03 |
| 139 + 07.61, 55.00 Rt. | 305353.30 | 1298891.37 |
| 140 + 00.00, 55.00 Rt. | 305400.88 | 1298970.56 |
| 141 + 50.00, 50.00 Rt. | 305482.43 | 1299096.56 |
| 145 + 20.00, 50.00 Rt. | 305673.00 | 1299413.71 |
| 146 + 50.00, 55.00 Rt. | 305736.21 | 1299527.99 |
| 148 + 00.00, 55.00 Rt. | 305816.63 | 1299655.98 |
| 150 + 00.00, 55.00 Rt. | 305928.00 | 1299823.94 |
| 152 + 00.00, 55.00 Rt. | 306043.96 | 1299988.66 |
| 153 + 75.00, 55.00 Rt. | 306146.46 | 1300130.49 |
| 154 + 50.00, 30.57 Rt. | 306210.20 | 1300176.97 |
| * 51 + 00.00, 35.43 Rt. | 305649.13 | 1299465.08 |

DELETED NOTE FOR PROJECT COORDINATES.

MOVED THIS NOTE:

Note: R/W monuments will be set in the field prior to Roadway Construction. If monuments are disturbed during construction, refer to the special note for R/W monumentation. Witness posts shall be placed one foot inside the proposed R/W monuments at locations to be determined by the Land Surveyor in charge of monumentation.

SCALE: 1"=400

FILE NAME: U:\96101.FIN KY22 OLDHAM COUNTY\CURRYS FORK BRIDGE 3-LANE SECTION\COVER-COORD CONTROL-SUMSHITS\96101_COORDCONTROL.SHEET.DGN
 USER: Ford
 DATE PLOTTED: November 1, 2010
 E-SHEET NAME: R04000CC
 MicroStation v8.11.7.180



CALL NO. 114

CONTRACT ID. 141501

OLDHAM COUNTY

FED/STATE PROJECT NUMBER STPM 5140 (038)

DESCRIPTION BALLARDSVILLE ROAD (KY 22)

WORK TYPE GRADE & DRAIN AND PAVEMENT ALTERNATES

PRIMARY COMPLETION DATE 5/15/2016

LETTING DATE: December 12,2014

Sealed Bids will be received electronically through the Bid Express bidding service until 10:00 AM EASTERN STANDARD TIME December 12,2014. Bids will be publicly announced at 10:00 AM EASTERN STANDARD TIME.

PLANS AVAILABLE FOR THIS PROJECT.

DBE CERTIFICATION REQUIRED - 4%

REQUIRED BID PROPOSAL GUARANTY: Not less than 5% of the total bid.

ADMINISTRATIVE DISTRICT - 05

CONTRACT ID - 141501

STPM 5140 (038)

COUNTY - OLDHAM

PCN - DE09300221401

STPM 5140 (038)

BALLARDSVILLE ROAD (KY 22) (MP 3.929) RECONSTRUCT KY 22 FROM KY 329B TO ABBOTT LANE INCLUDING THE TERMINI INTERSECTIONS OF KY 22 @ KY 329B AND KY 22 @ ABBOTT LANE ("BRIDGE HILL") (MP 5.320), A DISTANCE OF 01.60 MILES.GRADE & DRAIN AND PAVEMENT ALTERNATES SYP NO. 05-00304.15.

GEOGRAPHIC COORDINATES LATITUDE 38:19:51.00 LONGITUDE 85:26:59.00

COMPLETION DATE(S):

COMPLETED BY 05/15/2016

APPLIES TO ENTIRE PROJECT

General Decision Number: KY140100 11/21/2014 KY100

Superseded General Decision Number: KY20130100

State: Kentucky

Construction Type: Highway

Counties: Anderson, Bath, Bourbon, Boyd, Boyle, Bracken, Breckinridge, Bullitt, Carroll, Carter, Clark, Elliott, Fayette, Fleming, Franklin, Gallatin, Grant, Grayson, Greenup, Hardin, Harrison, Henry, Jefferson, Jessamine, Larue, Lewis, Madison, Marion, Mason, Meade, Mercer, Montgomery, Nelson, Nicholas, Oldham, Owen, Robertson, Rowan, Scott, Shelby, Spencer, Trimble, Washington and Woodford Counties in Kentucky.

HIGHWAY CONSTRUCTION PROJECTS (excluding tunnels, building structures in rest area projects & railroad construction; bascule, suspension & spandrel arch bridges designed for commercial navigation, bridges involving marine construction; and other major bridges).

| Modification Number | Publication Date |
|---------------------|------------------|
| 0 | 01/03/2014 |
| 1 | 02/14/2014 |
| 2 | 04/18/2014 |
| 3 | 05/09/2014 |
| 4 | 05/23/2014 |
| 5 | 06/06/2014 |
| 6 | 06/27/2014 |
| 7 | 07/04/2014 |
| 8 | 07/18/2014 |
| 9 | 07/25/2014 |
| 10 | 08/22/2014 |
| 11 | 10/24/2014 |
| 12 | 11/21/2014 |

BRIN0004-003 06/01/2011

BRECKENRIDGE COUNTY

| | Rates | Fringes |
|-----------------|----------|---------|
| BRICKLAYER..... | \$ 24.11 | 10.07 |

BRKY0001-005 06/01/2014

BULLITT, CARROLL, GRAYSON, HARDIN, HENRY, JEFFERSON, LARUE, MARION, MEADE, NELSON, OLDHAM, SHELBY, SPENCER, & TRIMBLE COUNTIES:

| | Rates | Fringes |
|-----------------|----------|---------|
| BRICKLAYER..... | \$ 25.37 | 10.50 |

BRKY0002-006 06/01/2011

BRACKEN, GALLATIN, GRANT, MASON & ROBERTSON COUNTIES:

| | Rates | Fringes |
|-------------------------|----------|---------|
| BRICKLAYER..... | \$ 26.57 | 10.26 |
| ----- | | |
| BRKY0007-004 06/01/2014 | | |

BOYD, CARTER, ELLIOT, FLEMING, GREENUP, LEWIS & ROWAN COUNTIES:

| | Rates | Fringes |
|-------------------------|----------|---------|
| BRICKLAYER..... | \$ 30.57 | 17.94 |
| ----- | | |
| BRKY0017-004 06/01/2009 | | |

ANDERSON, BATH, BOURBON, BOYLE, CLARK, FAYETTE, FRANKLIN,
HARRISON, JESSAMINE, MADISON, MERCER, MONTGOMERY, NICHOLAS,
OWEN, SCOTT, WASHINGTON & WOODFORD COUNTIES:

| | Rates | Fringes |
|-------------------------|----------|---------|
| BRICKLAYER..... | \$ 24.11 | 9.97 |
| ----- | | |
| CARP0064-001 04/01/2014 | | |

| | Rates | Fringes |
|-------------------------|----------|---------|
| CARPENTER..... | \$ 27.50 | 14.96 |
| Diver..... | \$ 41.63 | 14.96 |
| PILEDRIVERMAN..... | \$ 27.75 | 14.96 |
| ----- | | |
| ELEC0212-008 06/02/2014 | | |

BRACKEN, GALLATIN and GRANT COUNTIES

| | Rates | Fringes |
|-------------------------|----------|---------|
| ELECTRICIAN..... | \$ 26.74 | 16.45 |
| ----- | | |
| ELEC0212-014 07/01/2013 | | |

BRACKEN, GALLATIN & GRANT COUNTIES:

| | Rates | Fringes |
|--|----------|---------|
| Sound & Communication Technician..... | \$ 22.50 | 9.51 |
| ----- | | |
| ELEC0317-012 05/28/2014 | | |

BOYD, CARTER, ELLIOT & ROWAN COUNTIES:

| | Rates | Fringes |
|--------------------|----------|---------|
| ELECTRICIAN | | |
| Cable Splicer..... | \$ 32.68 | 18.13 |
| Electrician..... | \$ 32.62 | 21.45 |

ELEC0369-007 05/29/2013

ANDERSON, BATH, BOURBON, BOYLE, BRECKINRIDGE, BULLITT, CARROLL,
CLARK, FAYETTE, FRAONKLIN, GRAYSON, HARDIN, HARRISON, HENRY,
JEFFERSON, JESSAMINE, LARUE, MADISON, MARION, MEADE, MERCER,
MONTGOMERY, NELSON, NICHOLAS, OLDHAM, OWEN, ROBERTSON, SCOTT,
SHELBY, SPENCER, TRIMBLE, WASHINGTON, & WOODFORD COUNTIES:

| | Rates | Fringes |
|------------------|----------|---------|
| ELECTRICIAN..... | \$ 29.48 | 14.37 |

ELEC0575-002 06/02/2014

FLEMING, GREENUP, LEWIS & MASON COUNTIES:

| | Rates | Fringes |
|------------------|----------|---------|
| ELECTRICIAN..... | \$ 31.70 | 14.21 |

ENGI0181-018 07/01/2014

| | Rates | Fringes |
|--------------------------|----------|---------|
| POWER EQUIPMENT OPERATOR | | |
| GROUP 1..... | \$ 28.85 | 14.15 |
| GROUP 2..... | \$ 26.24 | 14.15 |
| GROUP 3..... | \$ 26.65 | 14.15 |
| GROUP 4..... | \$ 25.95 | 14.15 |

OPERATING ENGINEER CLASSIFICATIONS

GROUP 1 - A-Frame Winch Truck; Auto Patrol; Backfiller;
Batcher Plant; Bituminous Paver; Bituminous Transfer
Machine; Boom Cat; Bulldozer; Mechanic; Cableway; Carry-All
Scoop; Carry Deck Crane; Central Compressor Plant; Cherry
Picker; Clamshell; Concrete Mixer (21 cu. ft. or Over);
Concrete Paver; Truck-Mounted Concrete Pump; Core Drill;
Crane; Crusher Plant; Derrick; Derrick Boat; Ditching &
Trenching Machine; Dragline; Dredge Operator; Dredge
Engineer; Elevating Grader & Loaders; Grade-All; Gurries;
Heavy Equipment Robotics Operator/Mechanic; High Lift;
Hoe-Type Machine; Hoist (Two or More Drums); Hoisting
Engine (Two or More Drums); Horizontal Directional Drill
Operator; Hydrocrane; Hyster; KeCal Loader; LeTourneau;
Locomotive; Mechanic; Mechanically Operated Laser Screed;
Mechanic Welder; Mucking Machine; Motor Scraper; Orangepeel
Bucket; Overhead Crane; Piledriver; Power Blade; Pumpcrete;
Push Dozer; Rock Spreader, attached to equipment; Rotary
Drill; Roller (Bituminous); Rough Terrain Crane; Scarifier;
Scoopmobile; Shovel; Side Boom; Subgrader; Tailboom;
Telescoping Type Forklift; Tow or Push Boat; Tower Crane
(French, German & other types); Tractor Shovel; Truck
Crane; Tunnel Mining Machines, including Moles, Shields or
similar types of Tunnel Mining Equipment

GROUP 2 - Air Compressor (Over 900 cu. ft. per min.);
Bituminous Mixer; Boom Type Tamping Machine; Bull Float;

Concrete Mixer (Under 21 cu. ft.); Dredge Engineer;
Electric Vibrator; Compactor/Self-Propelled Compactor;
Elevator (One Drum or Buck Hoist); Elevator (When used to
Hoist Building Material); Finish Machine; Firemen & Hoist
(One Drum); Flexplane; Forklift (Regardless of Lift
Height); Form Grader; Joint Sealing Machine; Outboard Motor
Boat; Power Sweeper (Riding Type); Roller (Rock); Ross
Carrier; Skid Mounted or Trailer Mounted Concrete Pump; Skid
Steer Machine with all Attachments; Switchman or Brakeman;
Throttle Valve Person; Tractair & Road Widening Trencher;
Tractor (50 H.P. or Over); Truck Crane Oiler; Tugger;
Welding Machine; Well Points; & Whirley Oiler

GROUP 3 - All Off Road Material Handling Equipment,
including Articulating Dump Trucks; Greaser on Grease
Facilities servicing Heavy Equipment

GROUP 4 - Bituminous Distributor; Burlap & Curing Machine;
Cement Gun; Concrete Saw; Conveyor; Deckhand Oiler; Grout
Pump; Hydraulic Post Driver; Hydro Seeder; Mud Jack; Oiler;
Paving Joint Machine; Power Form Handling Equipment; Pump;
Roller (Earth); Steerman; Tamping Machine; Tractor (Under
50 H.P.); & Vibrator

CRANES - with booms 150 ft. & Over (Including JIB), and where
the length of the boom in combination with the length of
the piling leads equals or exceeds 150 ft. - \$1.00 over
Group 1 rate

EMPLOYEES ASSIGNED TO WORK BELOW GROUND LEVEL ARE TO BE PAID
10%
ABOVE BASIC WAGE RATE. THIS DOES NOT APPLY TO OPEN CUT WORK.

IRON0044-009 06/01/2013

BRACKEN, GALLATIN, GRANT, HARRISON, ROBERTSON,
BOURBON (Northern third, including Townships of Jackson,
Millersburg, Ruddel Mills & Shawhan);
CARROLL (Eastern third, including the Township of Ghent);
FLEMING (Western part, excluding Townships of Beechburg, Colfax,
Elizaville, Flemingsburg, Flemingsburg Junction, Foxport,
Grange City, Hillsboro, Hilltop, Mount Carmel, Muses Mills,
Nepton, Pecksridge, Plummers Landing, Plummers Mill, Poplar
Plains, Ringos Mills, Tilton & Wallingford);
MASON (Western two-thirds, including Townships of Dover,
Lewisburg, Mays Lick, Maysville, Minerva, Moranburg,
Murphysville, Ripley, Sardis, Shannon, South Ripley &
Washington);
NICHOLAS (Townships of Barefoot, Barterville, Carlisle,
Ellisville, Headquarters, Henryville, Morningglory, Myers &
Oakland Mills);
OWEN (Townships of Beechwood, Bromley, Fairbanks, Holbrook,
Jonesville, Long Ridge, Lusby's Mill, New, New Columbus, New
Liberty, Owenton, Poplar Grove, Rockdale, Sanders, Teresita &
Wheatley);
SCOTT (Northern two-thirds, including Townships of Biddle,
Davis, Delaplain, Elmville, Longlick, Muddy Ford, Oxford,
Rogers Gap, Sadieville, Skinnersburg & Stonewall)

| | Rates | Fringes |
|--------------------|----------|---------|
| IRONWORKER | | |
| Fence Erector..... | \$ 22.50 | 18.40 |
| Structural..... | \$ 24.80 | 18.40 |

IRON0070-006 06/01/2014

ANDERSON, BOYLE, BRECKINRIDGE, BULLITT, FAYETTE, FRANKLIN,
GRAYSON, HARDIN, HENRY, JEFFERSON, JESSAMINE, LARUE, MADISON,
MARION, MEADE, MERCER, NELSON, OLDHAM, SHELBY, SPENCER,
TRIMBLE, WASHINGTON & WOODFORD
BOURBON (Southern two-thirds, including Townships of Austerlity,
Centerville, Clintonville, Elizabeth, Hutchison, Littlerock,
North Middletown & Paris);
CARROLL (Western two-thirds, including Townships of Carrollton,
Easterday, English, Locust, Louis, Prestonville & Worthville);
CLARK (Western two-thirds, including Townships of Becknerville,
Flanagan, Ford, Pine Grove, Winchester & Wyandotte);
OWEN (Eastern eighth, including Townships of Glenmary, Gratz,
Monterey, Perry Park & Tacketts Mill);
SCOTT (Southern third, including Townships of Georgetown, Great
Crossing, Newtown, Stampling Ground & Woodlake);

| | Rates | Fringes |
|-----------------|----------|---------|
| IRONWORKER..... | \$ 26.97 | 19.75 |

IRON0372-006 06/01/2013

BRACKEN, GALLATIN, GRANT, HARRISON and ROBERTSON
BOURBON (Northern third, including Townships of Jackson,
Millersburg, Ruddel Mills & Shawhan);
CARROLL (Eastern third, including the Township of Ghent);
FLEMING (Western part, Excluding Townships of Beechburg, Colfax,
Elizaville, Flemingsburg, Flemingsburg Junction, Foxport,
Grange City, Hillsboro, Hilltop, Mount Carmel, Muses Mills,
Nepton, Pecksridge, Plummers Landing, Plummers Mill, Poplar
Plains,
Ringos Mills, Tilton & Wallingford);
MASON (Western two-thirds, including Townships of Dover,
Lewisburg, Mays Lick, Maysville, Minerva, Moranburg,
Murphysville, Ripley, Sardis, Shannon, South Ripley &
Washington);
NICHOLAS (Townships of Barefoot, Barterville, Carlisle,
Ellisville, Headquarters, Henryville, Morningglory, Myers &
Oakland Mills);
OWEN (Townships of Beechwood, Bromley, Fairbanks, Holbrook,
Jonesville, Long Ridge, Lusby's Mill, New, New Columbus, New
Liberty, Owenton, Poplar Grove, Rockdale, Sanders, Teresita &
Wheatley);
SCOTT (Northern two-thirds, including Townships of Biddle,
Davis, Delaplain, Elmville, Longlick, Muddy Ford, Oxford, Rogers
Gap, Sadieville, Skinnersburg & Stonewall) COUNTIES

Rates Fringes

IRONWORKER, REINFORCING.....\$ 26.47 19.30

* IRON0769-007 06/01/2014

BATH, BOYD, CARTER, ELLIOTT, GREENUP, LEWIS, MONTGOMERY & ROWAN CLARK (Eastern third, including townships of Bloomingdale, Hunt, Indian Fields, Kiddville, Loglick, Rightangele & Thomson); FLEMING (Townships of Beechburg, Colfax, Elizaville, Flemingsburg, Flemingsburg Junction, Foxport, Grange City, Hillsboro, Hilltop, Mount Carmel, Muses Mills, Nepton, Pecksridge, Plummers Landing, Plummers Mill, Poplar Plains, Ringos Mills, Tilton & Wallingford); MASON (Eastern third, including Townships of Helena, Marshall, Orangeburg, Plumville & Springdale); NICHOLAS (Eastern eighth, including the Township of Moorefield Sprout)

| | Rates | Fringes |
|-------------|----------|---------|
| IRONWORKER | | |
| ZONE 1..... | \$ 31.33 | 21.33 |
| ZONE 2..... | \$ 31.73 | 21.33 |
| ZONE 3..... | \$ 33.33 | 21.33 |

ZONE 1 - Up to 10 mile radius of Union Hall, Ashland, Ky.,
1643 Greenup Ave.

ZONE 2 - 10 to 50 mile radius of Union Hall, Ashland, Ky.,
1643 Greenup Ave.

ZONE 3 - 50 mile radius & over of Union Hall, Ashland, Ky.,
1643 Greenup Ave.

LABO0189-003 07/01/2014

BATH, BOURBON, BOYD, BOYLE, BRACKEN, CARTER, CLARK, ELLIOTT, FAYETTE, FLEMING, FRANKLIN, GALLATIN, GRANT, GREENUP, HARRISON, JESSAMINE, LEWIS, MADISON, MASON, MERCER, MONTGOMERY, NICHOLAS, OWEN, ROBERTSON, ROWAN, SCOTT, & WOOLFORD COUNTIES

| | Rates | Fringes |
|--------------|----------|---------|
| Laborers: | | |
| GROUP 1..... | \$ 21.80 | 11.96 |
| GROUP 2..... | \$ 22.05 | 11.96 |
| GROUP 3..... | \$ 22.10 | 11.96 |
| GROUP 4..... | \$ 22.70 | 11.96 |

LABORERS CLASSIFICATIONS

GROUP 1 - Aging & Curing of Concrete; Asbestos Abatement Worker; Asphalt Plant; Asphalt; Batch Truck Dump; Carpenter Tender; Cement Mason Tender; Cleaning of Machines; Concrete; Demolition; Dredging; Environmental - Nuclear, Radiation, Toxic & Hazardous Waste - Level D; Flagperson; Grade Checker; Hand Digging & Hand Back Filling; Highway Marker Placer; Landscaping, Mesh Handler & Placer; Puddler;

Railroad; Rip-rap & Grouter; Right-of-Way; Sign, Guard Rail & Fence Installer; Signal Person; Sound Barrier Installer; Storm & Sanitary Sewer; Swamper; Truck Spotter & Dumper; Wrecking of Concrete Forms; General Cleanup

GROUP 2 - Batter Board Man (Sanitary & Storm Sewer); Brickmason Tender; Mortar Mixer Operator; Scaffold Builder; Burner & Welder; Bushhammer; Chain Saw Operator; Concrete Saw Operator; Deckhand Scow Man; Dry Cement Handler; Environmental - Nuclear, Radiation, Toxic & Hazardous Waste - Level C; Forklift Operator for Masonary; Form Setter; Green Concrete Cutting; Hand Operated Grouter & Grinder Machine Operator; Jackhammer; Pavement Breaker; Paving Joint Machine; Pipelayer; Plastic Pipe Fusion; Power Driven Georgia Buggy & Wheel Barrow; Power Post Hole Digger; Precast Manhole Setter; Walk-Behind Tamper; Walk-Behind Trencher; Sand Blaster; Concrete Chipper; Surface Grinder; Vibrator Operator; Wagon Driller

GROUP 3 - Asphalt Luteman & Raker; Gunnite Nozzleman; Gunnite Operator & Mixer; Grout Pump Operator; Side Rail Setter; Rail Paved Ditches; Screw Operator; Tunnel (Free Air); Water Blaster

GROUP 4 - Caisson Worker (Free Air); Cement Finisher; Environmental - Nuclear, Radiation, Toxic & Hazardous Waste - Levels A & B; Miner & Driller (Free Air); Tunnel Blaster; & Tunnel Mucker (Free Air); Directional & Horizontal Boring; Air Track Drillers (All Types); Powdermen & Blasters; Troxler & Concrete Tester if Laborer is Utilized

LAB00189-008 07/01/2014

ANDERSON, BULLITT, CARROLL, HARDIN, HENRY, JEFFERSON, LARUE, MARION, MEADE, NELSON, OLDHAM, SHELBY, SPENCER, TRIMBLE & WASHINGTON COUNTIES

| | Rates | Fringes |
|--------------|----------|---------|
| Laborers: | | |
| GROUP 1..... | \$ 22.71 | 11.05 |
| GROUP 2..... | \$ 22.96 | 11.05 |
| GROUP 3..... | \$ 23.01 | 11.05 |
| GROUP 4..... | \$ 23.61 | 11.05 |

LABORERS CLASSIFICATIONS

GROUP 1 - Aging & Curing of Concrete; Asbestos Abatement Worker; Asphalt Plant; Asphalt; Batch Truck Dump; Carpenter Tender; Cement Mason Tender; Cleaning of Machines; Concrete; Demolition; Dredging; Environmental - Nuclear, Radiation, Toxic & Hazardous Waste - Level D; Flagperson; Grade Checker; Hand Digging & Hand Back Filling; Highway Marker Placer; Landscaping, Mesh Handler & Placer; Puddler; Railroad; Rip-rap & Grouter; Right-of-Way; Sign, Guard Rail & Fence Installer; Signal Person; Sound Barrier Installer; Storm & Sanitary Sewer; Swamper; Truck Spotter & Dumper; Wrecking of Concrete Forms; General Cleanup

GROUP 2 - Batter Board Man (Sanitary & Storm Sewer);
Brickmason Tender; Mortar Mixer Operator; Scaffold Builder;
Burner & Welder; Bushhammer; Chain Saw Operator; Concrete
Saw Operator; Deckhand Scow Man; Dry Cement Handler;
Environmental - Nuclear, Radiation, Toxic & Hazardous Waste
- Level C; Forklift Operator for Masonary; Form Setter;
Green Concrete Cutting; Hand Operated Grouter & Grinder
Machine Operator; Jackhammer; Pavement Breaker; Paving
Joint Machine; Pipelayer; Plastic Pipe Fusion; Power Driven
Georgia Buggy & Wheel Barrow; Power Post Hole Digger;
Precast Manhole Setter; Walk-Behind Tamper; Walk-Behind
Trencher; Sand Blaster; Concrete Chipper; Surface Grinder;
Vibrator Operator; Wagon Driller

GROUP 3 - Asphalt Luteman & Raker; Gunnite Nozzleman;
Gunnite Operator & Mixer; Grout Pump Operator; Side Rail
Setter; Rail Paved Ditches; Screw Operator; Tunnel (Free
Air); Water Blaster

GROUP 4 - Caisson Worker (Free Air); Cement Finisher;
Environmental - Nuclear, Radiation, Toxic & Hazardous Waste
- Levels A & B; Miner & Driller (Free Air); Tunnel Blaster;
& Tunnel Mucker (Free Air); Directional & Horizontal
Boring; Air Track Drillers (All Types); Powdermen &
Blasters; Troxler & Concrete Tester if Laborer is Utilized

LABO0189-009 07/01/2014

BRECKINRIDGE & GRAYSON COUNTIES

| | Rates | Fringes |
|--------------|----------|---------|
| Laborers: | | |
| GROUP 1..... | \$ 22.66 | 11.10 |
| GROUP 2..... | \$ 22.91 | 11.10 |
| GROUP 3..... | \$ 22.96 | 11.10 |
| GROUP 4..... | \$ 23.56 | 11.10 |

LABORERS CLASSIFICATIONS

GROUP 1 - Aging & Curing of Concrete; Asbestos Abatement
Worker; Asphalt Plant; Asphalt; Batch Truck Dump; Carpenter
Tender; Cement Mason Tender; Cleaning of Machines;
Concrete; Demolition; Dredging; Environmental - Nuclear,
Radiation, Toxic & Hazardous Waste - Level D; Flagperson;
Grade Checker; Hand Digging & Hand Back Filling; Highway
Marker Placer; Landscaping, Mesh Handler & Placer; Puddler;
Railroad; Rip-rap & Grouter; Right-of-Way; Sign, Guard Rail
& Fence Installer; Signal Person; Sound Barrier Installer;
Storm & Sanitary Sewer; Swamper; Truck Spotter & Dumper;
Wrecking of Concrete Forms; General Cleanup

GROUP 2 - Batter Board Man (Sanitary & Storm Sewer);
Brickmason Tender; Mortar Mixer Operator; Scaffold Builder;
Burner & Welder; Bushhammer; Chain Saw Operator; Concrete
Saw Operator; Deckhand Scow Man; Dry Cement Handler;
Environmental - Nuclear, Radiation, Toxic & Hazardous Waste
- Level C; Forklift Operator for Masonary; Form Setter;

Green Concrete Cutting; Hand Operated Grouter & Grinder Machine Operator; Jackhammer; Pavement Breaker; Paving Joint Machine; Pipelayer; Plastic Pipe Fusion; Power Driven Georgia Buggy & Wheel Barrow; Power Post Hole Digger; Precast Manhole Setter; Walk-Behind Tamper; Walk-Behind Trencher; Sand Blaster; Concrete Chipper; Surface Grinder; Vibrator Operator; Wagon Driller

GROUP 3 - Asphalt Luteman & Raker; Gunnite Nozzleman; Gunnite Operator & Mixer; Grout Pump Operator; Side Rail Setter; Rail Paved Ditches; Screw Operator; Tunnel (Free Air); Water Blaster

GROUP 4 - Caisson Worker (Free Air); Cement Finisher; Environmental - Nuclear, Radiation, Toxic & Hazardous Waste - Levels A & B; Miner & Driller (Free Air); Tunnel Blaster; & Tunnel Mucker (Free Air); Directional & Horizontal Boring; Air Track Drillers (All Types); Powdermen & Blasters; Troxler & Concrete Tester if Laborer is Utilized

PAIN0012-005 06/11/2005

BATH, BOURBON, BOYLE, CLARK, FAYETTE, FLEMING, FRANKLIN, HARRISON, JESSAMINE, MADISON, MERCER, MONTGOMERY, NICHOLAS, ROBERTSON, SCOTT & WOODFORD COUNTIES:

| | Rates | Fringes |
|--|----------|---------|
| PAINTER | | |
| Bridge/Equipment Tender and/or Containment Builder.. | \$ 18.90 | 5.90 |
| Brush & Roller..... | \$ 21.30 | 5.90 |
| Elevated Tanks; Steeplejack Work; Bridge & Lead Abatement..... | \$ 22.30 | 5.90 |
| Sandblasting & Waterblasting..... | \$ 22.05 | 5.90 |
| Spray..... | \$ 21.80 | 5.90 |

PAIN0012-017 05/01/2014

BRACKEN, GALLATIN, GRANT, MASON & OWEN COUNTIES:

| | Rates | Fringes |
|--|----------|---------|
| PAINTER (Heavy & Highway Bridges - Guardrails - Lightpoles - Striping) | | |
| Bridge Equipment Tender and Containment Builder..... | \$ 20.73 | 8.71 |
| Brush & Roller..... | \$ 23.39 | 8.71 |
| Elevated Tanks; Steeplejack Work; Bridge & Lead Abatement..... | \$ 24.39 | 8.71 |
| Sandblasting & Water Blasting..... | \$ 24.14 | 8.71 |
| Spray..... | \$ 23.89 | 8.71 |

PAIN0118-004 06/01/2014

ANDERSON, BRECKINRIDGE, BULLITT, CARROLL, GRAYSON, HARDIN,
HENRY, JEFFERSON, LARUE, MARION, MEADE, NELSON, OLDHAM, SHELBY,
SPENCER, TRIMBLE & WASHINGTON COUNTIES:

| | Rates | Fringes |
|---|----------|---------|
| PAINTER | | |
| Brush & Roller..... | \$ 18.50 | 12.02 |
| Spray, Sandblast, Power Tools, Waterblast & Steam Cleaning..... | \$ 19.00 | 12.02 |

PAIN1072-003 12/01/2013

BOYD, CARTER, ELLIOTT, GREENUP, LEWIS and ROWAN COUNTIES

| | Rates | Fringes |
|---|----------|---------|
| Painters: | | |
| Bridges; Locks; Dams; Tension Towers & Energized Substations..... | \$ 31.03 | 15.10 |
| Power Generating Facilities. | \$ 27.79 | 15.10 |

PLUM0248-003 06/01/2014

BOYD, CARTER, ELLIOTT, GREENUP, LEWIS & ROWAN COUNTIES:

| | Rates | Fringes |
|------------------------------|----------|---------|
| Plumber and Steamfitter..... | \$ 33.00 | 18.95 |

PLUM0392-007 06/01/2014

BRACKEN, CARROLL (Eastern Half), GALLATIN, GRANT, MASON, OWEN &
ROBERTSON COUNTIES:

| | Rates | Fringes |
|-------------------------------|----------|---------|
| Plumbers and Pipefitters..... | \$ 29.80 | 17.79 |

PLUM0502-003 08/01/2013

BRECKINRIDGE, BULLITT, CARROLL (Western Half), FRANKLIN
(Western three-fourths), GRAYSON, HARDIN, HENRY, JEFFERSON,
LARUE, MARION, MEADE, NELSON, OLDHAM, SHELBY, SPENCER, TRIMBLE &
WASHINGTON COUNTIES

| | Rates | Fringes |
|--------------|----------|---------|
| PLUMBER..... | \$ 32.00 | 17.17 |

SUKY2010-160 10/08/2001

| | Rates | Fringes |
|--|-------|---------|
|--|-------|---------|

Truck drivers:

| | | |
|--------------|----------|------|
| GROUP 1..... | \$ 16.57 | 7.34 |
| GROUP 2..... | \$ 16.68 | 7.34 |
| GROUP 3..... | \$ 16.86 | 7.34 |
| GROUP 4..... | \$ 16.96 | 7.34 |

TRUCK DRIVER CLASSIFICATIONS

GROUP 1 - Mobile Batch Truck Tender

GROUP 2 - Greaser; Tire Changer; & Mechanic Tender

GROUP 3 - Single Axle Dump; Flatbed; Semi-trailer or Pole Trailer when used to pull building materials and equipment; Tandem Axle Dump; Distributor; Mixer; & Truck Mechanic

GROUP 4 - Euclid & Other Heavy Earthmoving Equipment & Lowboy; Articulator Cat; 5-Axle Vehicle; Winch & A-Frame when used in transporting materials; Ross Carrier; Forklift when used to transport building materials; & Pavement Breaker

WELDERS - Receive rate prescribed for craft performing operation to which welding is incidental.
=====

Unlisted classifications needed for work not included within the scope of the classifications listed may be added after award only as provided in the labor standards contract clauses (29CFR 5.5 (a) (1) (ii)).

The body of each wage determination lists the classification and wage rates that have been found to be prevailing for the cited type(s) of construction in the area covered by the wage determination. The classifications are listed in alphabetical order of "identifiers" that indicate whether the particular rate is union or non-union.

Union Identifiers

An identifier enclosed in dotted lines beginning with characters other than "SU" denotes that the union classification and rate have found to be prevailing for that classification. Example: PLUM0198-005 07/01/2011. The first four letters , PLUM, indicate the international union and the four-digit number, 0198, that follows indicates the local union number or district council number where applicable , i.e., Plumbers Local 0198. The next number, 005 in the example, is an internal number used in processing the wage determination. The date, 07/01/2011, following these characters is the

effective date of the most current negotiated rate/collective bargaining agreement which would be July 1, 2011 in the above example.

Union prevailing wage rates will be updated to reflect any changes in the collective bargaining agreements governing the rates.

0000/9999: weighted union wage rates will be published annually each January.

Non-Union Identifiers

Classifications listed under an "SU" identifier were derived from survey data by computing average rates and are not union rates; however, the data used in computing these rates may include both union and non-union data. Example: SULA2004-007 5/13/2010. SU indicates the rates are not union majority rates, LA indicates the State of Louisiana; 2004 is the year of the survey; and 007 is an internal number used in producing the wage determination. A 1993 or later date, 5/13/2010, indicates the classifications and rates under that identifier were issued as a General Wage Determination on that date.

Survey wage rates will remain in effect and will not change until a new survey is conducted.

WAGE DETERMINATION APPEALS PROCESS

1.) Has there been an initial decision in the matter? This can be:

- * an existing published wage determination
- * a survey underlying a wage determination
- * a Wage and Hour Division letter setting forth a position on a wage determination matter
- * a conformance (additional classification and rate) ruling

On survey related matters, initial contact, including requests for summaries of surveys, should be with the Wage and Hour Regional Office for the area in which the survey was conducted because those Regional Offices have responsibility for the Davis-Bacon survey program. If the response from this initial contact is not satisfactory, then the process described in 2.) and 3.) should be followed.

With regard to any other matter not yet ripe for the formal process described here, initial contact should be with the Branch of Construction Wage Determinations. Write to:

Branch of Construction Wage Determinations
Wage and Hour Division
U.S. Department of Labor
200 Constitution Avenue, N.W.
Washington, DC 20210

2.) If the answer to the question in 1.) is yes, then an interested party (those affected by the action) can request review and reconsideration from the Wage and Hour Administrator (See 29 CFR Part 1.8 and 29 CFR Part 7). Write to:

Wage and Hour Administrator
U.S. Department of Labor
200 Constitution Avenue, N.W.
Washington, DC 20210

The request should be accompanied by a full statement of the interested party's position and by any information (wage payment data, project description, area practice material, etc.) that the requestor considers relevant to the issue.

3.) If the decision of the Administrator is not favorable, an interested party may appeal directly to the Administrative Review Board (formerly the Wage Appeals Board). Write to:

Administrative Review Board
U.S. Department of Labor
200 Constitution Avenue, N.W.
Washington, DC 20210

4.) All decisions by the Administrative Review Board are final.

=====
END OF GENERAL DECISION

Fringe benefit amounts are applicable for all hours worked except when otherwise noted.

These rates are listed pursuant to the Kentucky Determination No. CR-14-III- HWY dated July 14, 2014.

No laborer, workman or mechanic shall be paid at a rate less than that of a Journeyman except those classified as bona fide apprentices.

Apprentices or trainees shall be permitted to work as such subject to Administrative Regulations adopted by the Commissioner of Workplace Standards. Copies of these regulations will be furnished upon request from any interested person.

Before using apprentices on the job the contractor shall present to the Contracting Officer written evidence of registration of such employees in a program of a State apprenticeship and training agency approved and recognized by the U. S. Bureau of Apprenticeship and Training. In the absence of such a State agency, the contractor shall submit evidence of approval and registration by the U. S. Bureau of Apprenticeship and Training.

The contractor shall submit to the Contracting Officer, written evidence of the established apprenticeship-journeyman ratios and wage rates in the project area, which will be the basis for establishing such ratios and rates for the project under the applicable contract provisions.

TO: EMPLOYERS/EMPLOYEES

PREVAILING WAGE SCHEDULE:

The wages indicated on this wage schedule are the least permitted to be paid for the occupations indicated. When an employee works in more than one classification, the employer must record the number of hours worked in each classification at the prescribed hourly base rate.

OVERTIME:

Overtime is to be paid after an employee works eight (8) hours a day or forty (40) hours a week, whichever gives the employee the greater wages. At least time and one-half the base rate is required for all overtime. A laborer, workman or mechanic and an employer may enter into a written agreement or a collective bargaining agreement to work more than eight (8) hours a calendar day but not more than ten (10) hours a calendar day for the straight time hourly rate. Wage violations or questions should be directed to the designated Engineer or the undersigned.

Diana Castle Radcliffe, P.E.
Director, Division of Construction Procurement
Frankfort, Kentucky 40622